

Achieving More Together

*An historic opportunity to
advance human health and
well-being through creativity,
collaboration, and convergence
in research and discovery*

Our combined experience in leading successful expansion projects in medical and academic institutions has equipped us with the skills and know-how to realize our shared vision of building the Health Discovery Tower – a world-class hub of innovation in life sciences, public health, biomedical engineering, and pharmaceutical research.

By bringing together researchers, start-ups, and health care professionals from Rambam Health Care Campus and University of Haifa, we will create an environment that fuels scientific investigation, discovery and innovation, and addresses today's most pressing health challenges.



Professor Rafi Beyar
Director & CEO
Rambam Health Care Campus



Professor Ron Robin
President
University of Haifa



more tech transfer



THE TOWER
WILL INCLUDE

GROUND FLOOR

Congress and Exhibition Center

FLOORS 1-7

Rambam Health Care Campus

Clinical Research Center at Rambam (CRIR)

Ophthalmology Institute

Gastroenterology Institute

School of Graduate Dentistry

FLOORS 8-13

University of Haifa

Center for Translational Research in
Health Sciences and Public Health

Center for Evidence-Based
Nursing Research

Research Center for Health Sciences
and Natural Sciences

FLOORS 14-15

Technion - Israel Institute of Technology

Medical Engineering - Faculty of Medicine

FLOORS 16-19

Innovation Center



RAMBAM
Health Care Campus



אוניברסיטת חיפה
University of Haifa
جامعة حيفا



TECHNION
Israel Institute
of Technology



RAMBAM Health Care Campus

(GROUND FLOOR & FLOORS 1-7)

Major developments in medicine are often the product of talented clinicians/researchers who work in the clinical environment and are able to identify today's most pressing needs.

Rambam is home to a robust, lifesaving, basic and clinical research enterprise. The hospital's clinical activities span all medical and surgical disciplines. Acclaimed worldwide for medical expertise and innovation, Rambam is a center of excellence in several medical specialties, including cardiology, oncology, surgery, and trauma.

Rambam's Congress and Exhibition Center, on the ground floor of the tower, will provide convention services and facilities for researchers, physicians, and entrepreneurs throughout Israel.

Two floors will be dedicated to the Clinical Research Institute at Rambam (CRIR), focusing on the fields of hematology, nephrology, cardiovascular medicine, gastroenterology, brain and neuroscience, cancer, diabetes, obesity, and endocrinology. The CRIR will provide all the services necessary for presenting and implementing projects, for acquiring grants, and for guiding translational research projects to eventual commercial viability. Multidisciplinary technological support will be made available for all equipment throughout the Health Discovery Tower by its Technological Support Department.

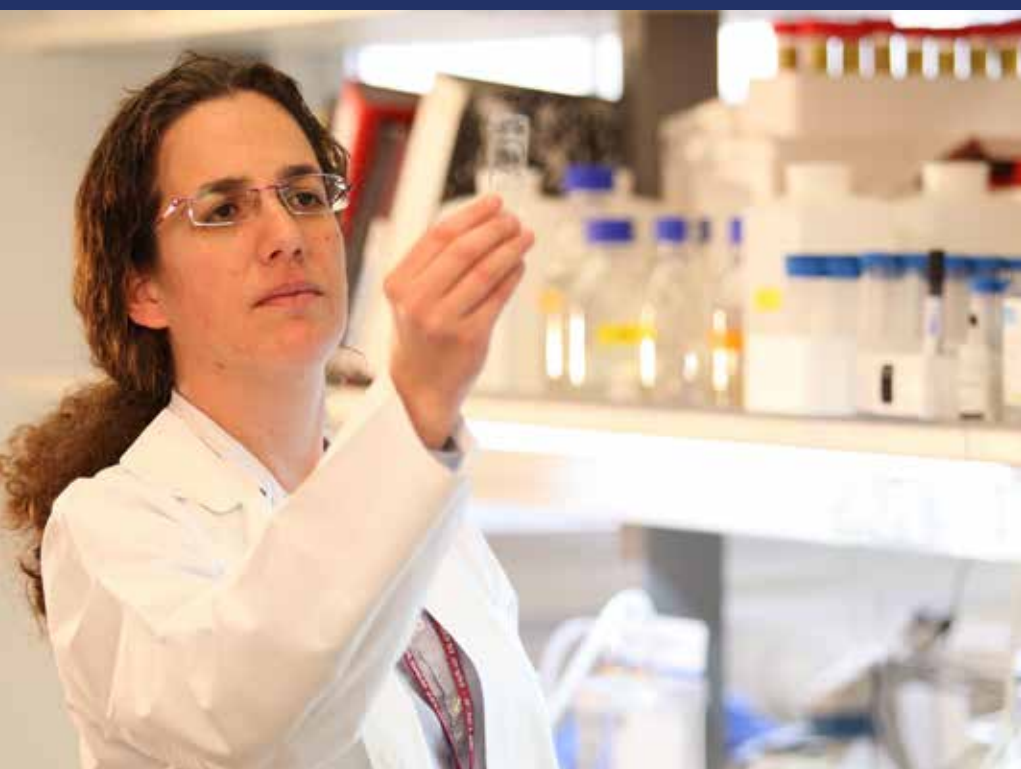
Five floors will be dedicated to Rambam's Ophthalmology Institute, Gastroenterology Institute, and School of Graduate Dentistry.

>The Ophthalmology Institute will markedly enhance services provided to Rambam's ophthalmic patients. Specialized treatment rooms, facilities for professional training and research, advanced equipment, and more will provide a comprehensive approach towards ophthalmic challenges.



“I deeply believe that physicians who are also involved in basic science provide better clinical service to their patients because they are humbled by their appreciation of nature's complexity and therefore weigh their clinical decisions with the greatest care.”

*- Professor Aaron Ciechanover, 2004 Nobel Laureate
Former Chair, Rambam Scientific Advisory Council*

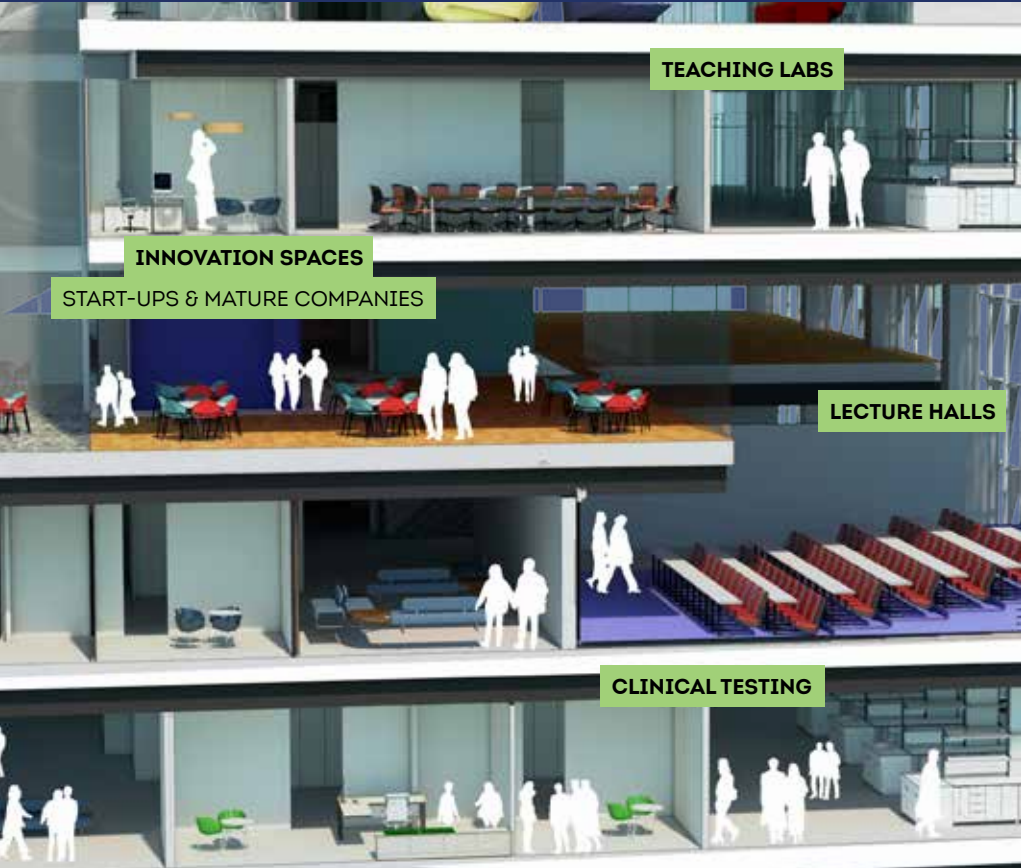


> The Gastroenterology Institute will lead in the development of novel diagnostic assays for biologic agents used to individualize and optimize therapy, and aid in the understanding of immune responses to these drugs. Extensive research will seek out new solutions for inflammatory bowel disease and the radiation damage to the intestines that follows related cancer treatment.

> The School of Graduate Dentistry is a major academic teaching center for post-graduate training. The new facilities will further extend cutting-edge research and clinical treatments in the areas of Periodontology and Implant Dentistry, Endodontology, and Maxillofacial Rehabilitation.

Basic and applied clinical research performed in the two institutes and the School of Graduate Dentistry will be leveraged by industry to promote medical advances, devices, treatments, and therapies in all related fields.

**A 20-STORY MULTIDISCIPLINARY
CENTER FOR HEALTH INNOVATION**



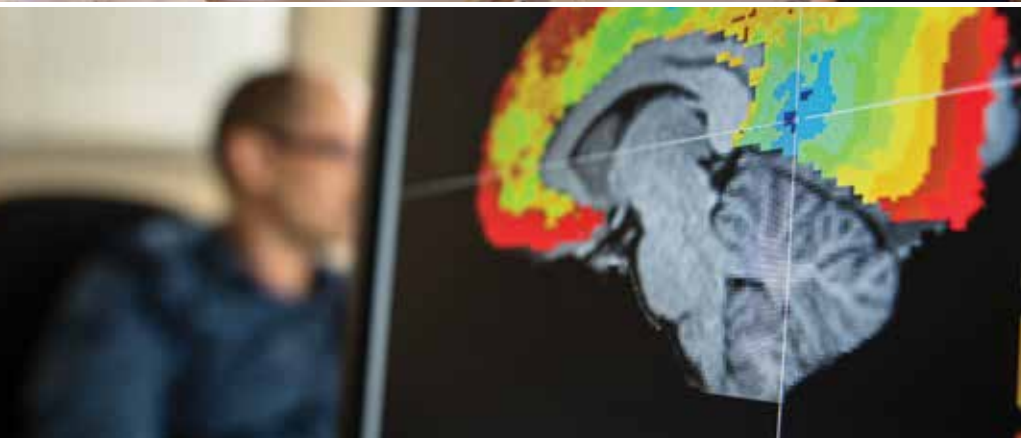


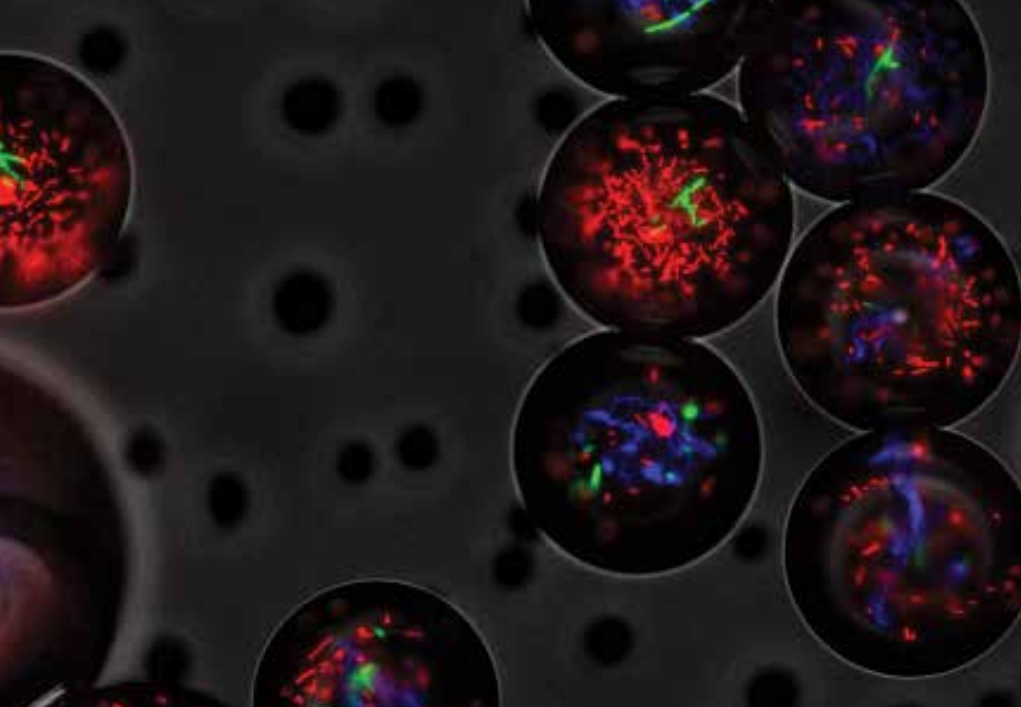
(FLOORS 8-13)

University of Haifa is home to numerous world-class research centers and institutes, as well as IBM's Research and Technology-Haifa Research Laboratory - the largest such IBM facility outside of the U.S.A. Six floors of the Health Discovery Tower will house University of Haifa laboratories to support basic and applied research. Lab activities will engage in life sciences, public health and pharmaceutical research.

The Tower's close proximity to the hospital will enable close collaboration between University of Haifa researchers, Rambam clinicians and Technion scientists and provide access to necessary clinical resources, such as imaging devices, genetic testing and the advanced equipment systems.

The University's Center for Translational Research in Health Sciences and Public Health will work hand-in-hand with Rambam's clinician scientists to meet the most relevant health challenges. Its Center for Evidence-based Nursing Research and Research Center for Health Sciences and Natural Sciences will deal with questions and challenges that have a direct connection to medicine and the biophysics of drug development, neurobiology, and the biology of longevity.

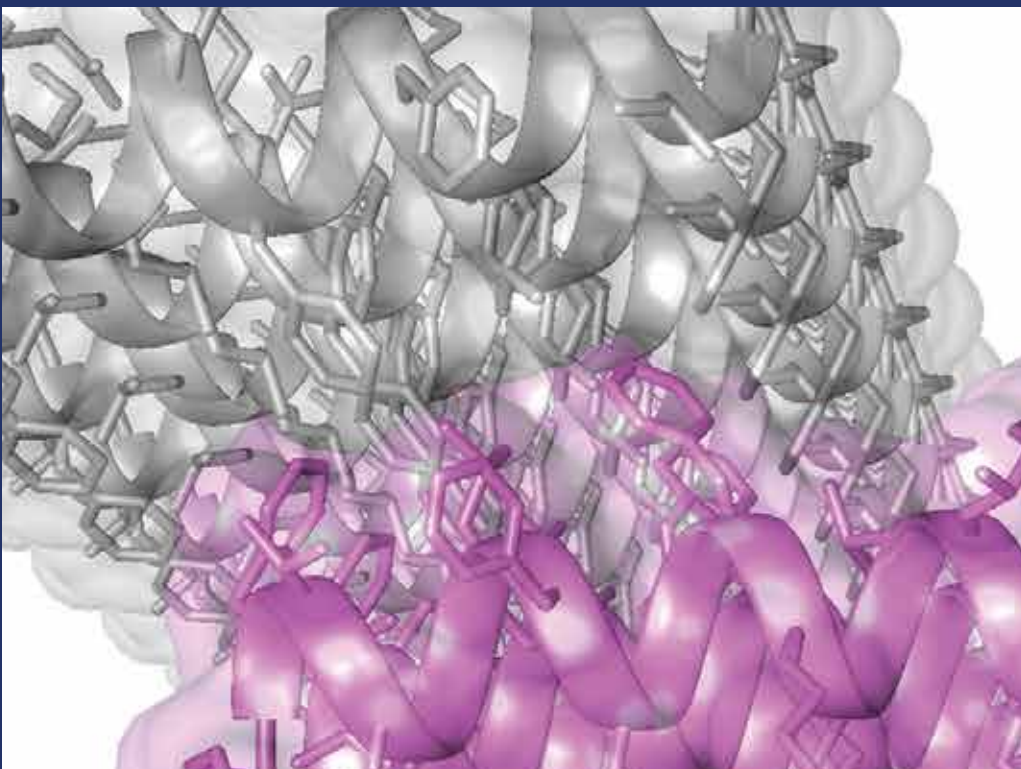




(FLOORS 14-15)

The Technion-Israel Institute of Technology already has world-class facilities adjacent to Rambam Health Care Campus. A new multidisciplinary medical engineering center coordinated by the Faculty of Medicine in the Health Discovery Tower will further their research endeavors and impact on medicine by providing new medical engineering laboratories for researchers from various Technion faculties.

This center will serve as the crucible for technological innovation leading to development of unique ideas based on biomedical research, resulting in new biotechnological and pharmacological products.



INNOVATION CENTER

(FLOORS 16-19)

The Health Discovery Tower will be home to a new Innovation Center (four floors). The Center will provide Rambam's clinician-scientists with opportunities to turn new knowledge into novel products and services by assisting in the establishment of incubators to generate start-ups that secure funding from commercial sources. The Innovation Center's attractive state-of-the-art facilities will provide added value to local medical and pharmaceutical start-ups and established companies, making the Health Discovery Tower a powerhouse for drug and device development. It will also facilitate critical interactions between Haifa's innovative biomedical technology industry, academia, and Rambam clinicians, and foster national and international collaborations—all focused on creating the future of medicine for humankind.

